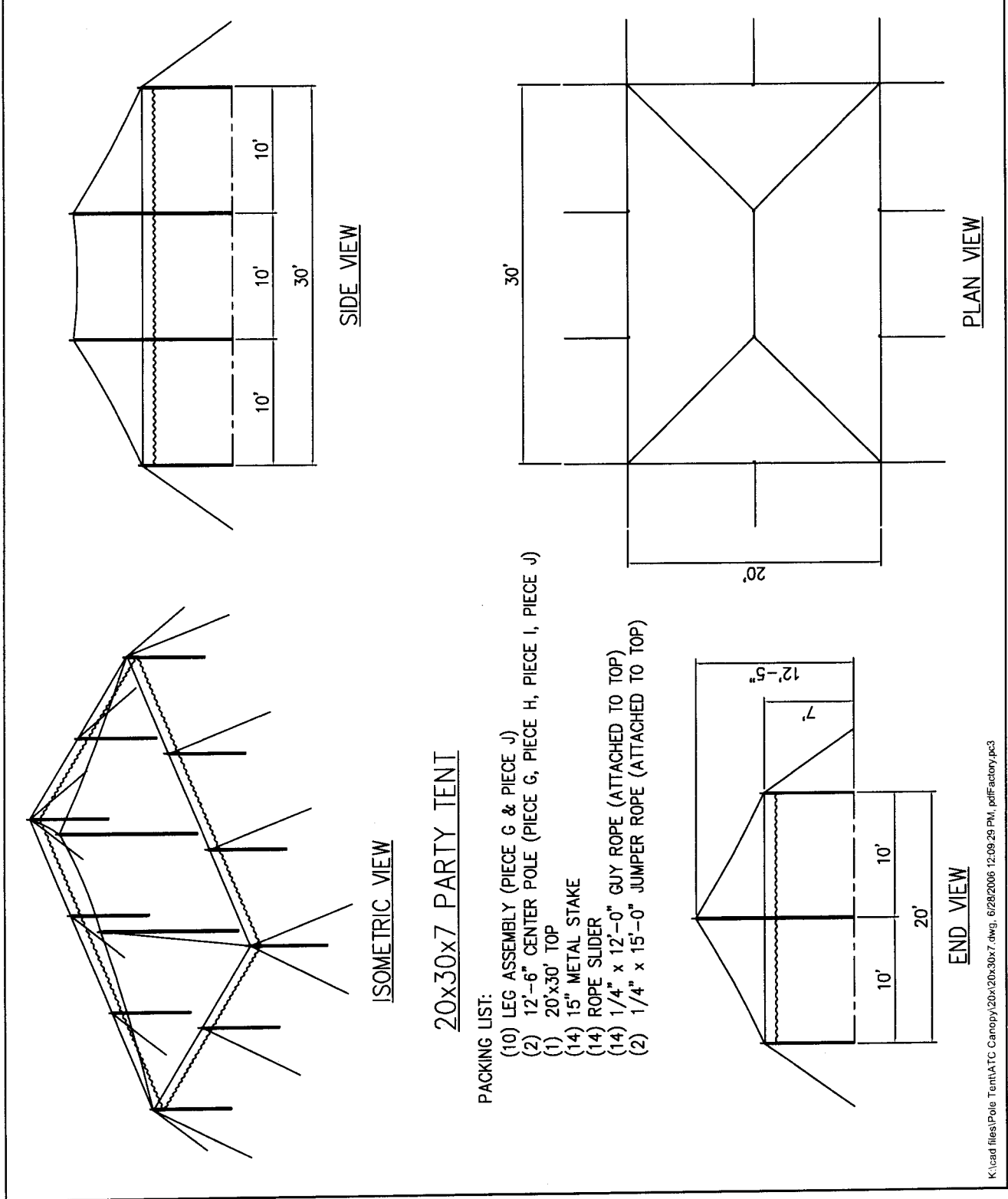


# Diagrams- Cont.

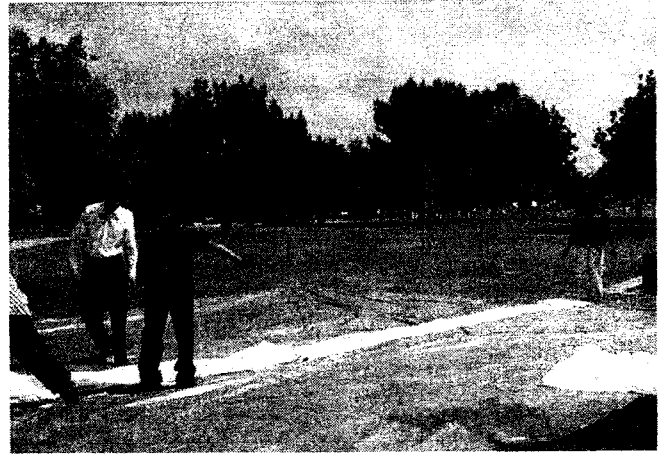
STANDARD		AZTEC		DATE 01/04/05		ORDERED -		PART NO. AZ-20307-ATC CANOPY 1	
ATC CANOPY / STANDARD		490 ALASKA AVE TORRANCE, CA 90503 (800) 228-5687 - FAX (310) 381-0722		DRAWN CM		DRAWN CM		AZ-20307-ATC CANOPY 1	
20' W x 30' L x 7' LEGS		KT		DATE 01/04/05		ORDERED -		PART NO. AZ-20307-ATC CANOPY 1	



# Installation-

## Step 1:

Lay out a ground cloth over the area to be covered by the tent. Unfold the tent top fabric over the groundcloth with the shiny side facing up. Stretch out the fabric and pull the corners square.



## Step 2:

Drive stakes, approximately 5ft out from the perimeter of the tent with the hooks facing away from the tent. Drive two stakes in for each corner tie-down at a 90 degree and one stake for each side pole leg.



## Step 3:

Loop the tensioning rope over the hook of the stake and leave plenty of slack in the rope.



## Step 4:

Assemble the two piece side poles with the tip (pin) at the top end of the pole. Insert the sidepoles into the grommets and reinforcement rings around the perimeter of the tent top. Erect side poles and leave just short of vertical.



**Step 5:**

Assemble and erect the center pole(s).

10x- 3pc Centerpole measuring 9'4"

15x- 3pc Centerpole measuring 10'5"

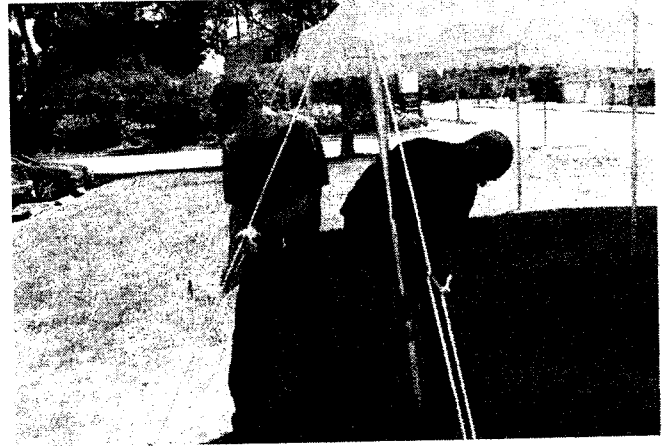
20x- 4pc Centerpole measuring 12'6"

From underneath the tent poke the tip (pin) of the centerpole through the ring at the peak and push the fabric toward the sky until the centerpole is vertical.



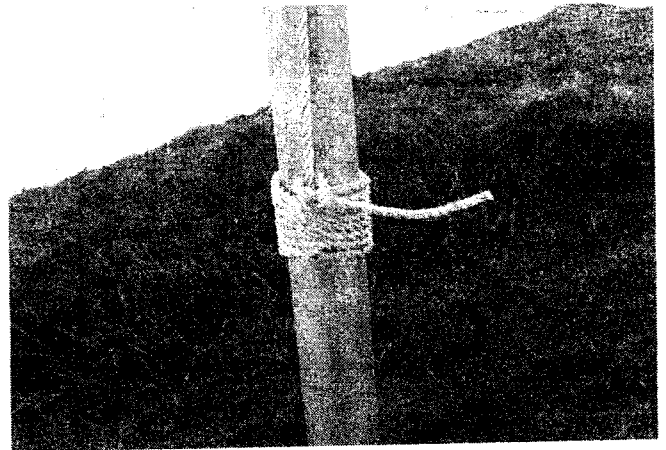
**Step 6:**

Straighten the sidepoles around the tent so that they are vertical and plum. Use the rope tensioners to pull the tent top tight. Be careful that you do not over tension one side of the tent as it will pull the opposite side out of vertical.



**Step 7:**

Tie off the jumper ropes. Connected to each reinforcement ring at the peak is a 1/4" Polypropelene rope that should be tied to the center poles to prevent the top from lifting off the centerpoles during windy conditions.



**Step 8:**

Install any sidewall needed by clipping the top hooks of the wall to the rope-line just under the valance of the tent.

