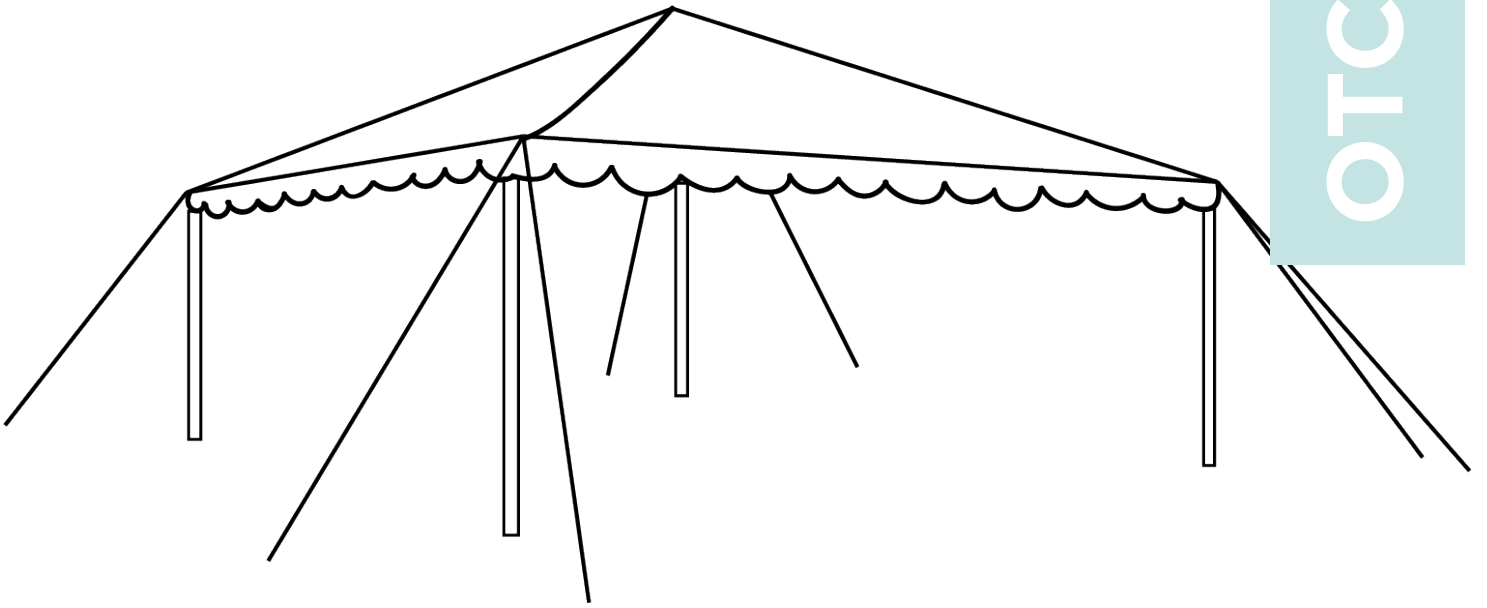


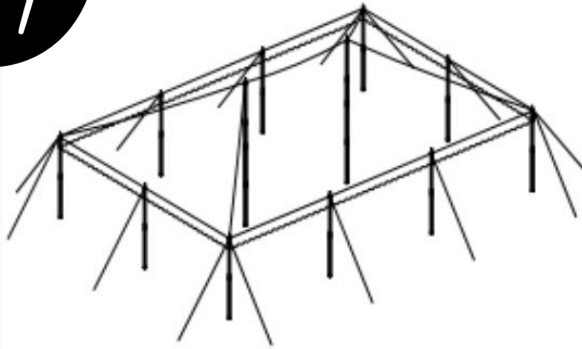
OTC TENTS



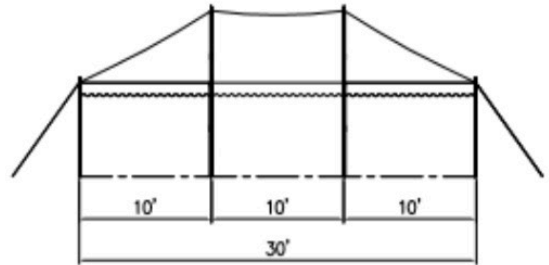
OTC 20X30 TENT



OTC 20X30 TENT



ISOMETRIC VIEW

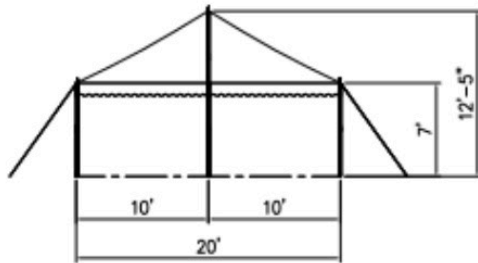


SIDE VIEW

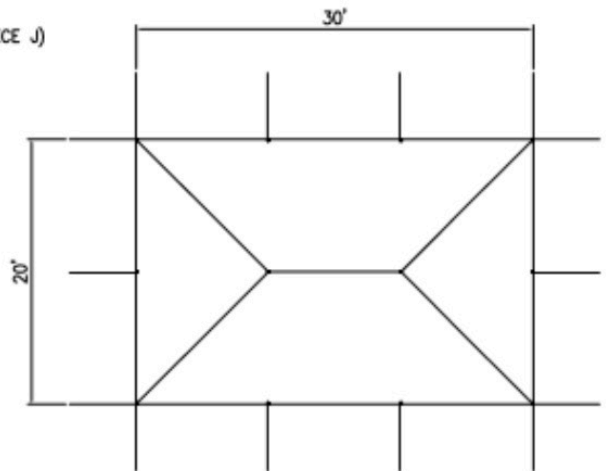
20x30x7 PARTY TENT

PACKING LIST:

- (10) LEG ASSEMBLY (PIECE G & PIECE J)
- (2) 12'-6" CENTER POLE (PIECE G, PIECE H, PIECE I, PIECE J)
- (1) 20'x30' TOP
- (14) 15" METAL STAKE
- (14) ROPE SLIDER
- (14) 1/4" x 12'-0" GUY ROPE (ATTACHED TO TOP)
- (2) 1/4" x 15'-0" JUMPER ROPE (ATTACHED TO TOP)



END VIEW



PLAN VIEW

STEPS:

1. Lay out a ground cloth over the area to be covered by the tent. Unfold the tent top fabric over the ground cloth with the shiny side facing up. Stretch out the fabric and pull the corners square.
2. Drive stakes approximately 5ft out from the perimeter of the tent with the hooks facing away from the tent. Drive 2 stakes in for each corner, tie-down at a 90 degree and one stake for each side pole leg.

STEPS:

3. Loop the tensioning rope over the hook of the stake and leave plenty of slack in the rope.

4. Assemble the 2 piece side poles with the tip (pin) at the top end of the pole. Insert the side poles into the grommets and reinforcement rings around the perimeter of the tent top. Erect side poles and leave just short of vertical.

5. Assemble and erect the center pole(s):

10x- 3pc center pole measuring 9'4"

15x- 3pc center pole measuring 10'5"

20x- 4pc center pole measuring 12'6"

From underneath the tent, poke the tip (pin) of the center pole through the ring at the peak and push the fabric toward the sky until the center pole is vertical.

6. Straighten the side poles around the tent so that they are vertical and plum. Use the rope tensioners to pull the tent top tight. Be careful that you do not over tension one side of the tent as it will pull the opposite side out of vertical.

7. Tie off the jumper ropes. Connected to each reinforcement ring at the peak is a 1/4" polypropylene rope that should be tied to the center poles to prevent the top from lifting off the center poles during windy conditions.

8. Install any sidewall needed by clipping the top hooks of the wall to the rope-line just under the valance of the tent.